



Contents lists available at ScienceDirect

Journal of Wind Engineering and Industrial Aerodynamics

journal homepage: www.elsevier.com/locate/jweia



Erratum

Erratum to “Guidelines for the required time resolution of meteorological input data for wind-driven rain calculations on buildings” [J. Wind Eng. Ind. Aerodyn. 96(5) (2008) 621–639]

B. Blocken^{a,*}, J. Carmeliet^{b,c}

^a Building Physics and Systems, Technische Universiteit Eindhoven, P.O. box 513, 5600 MB Eindhoven, The Netherlands

^b Chair of Building Physics, Swiss Federal Institute of Technology ETHZ, ETH-Hönggerberg, CH-8093 Zürich, Switzerland

^c Empa, Swiss Federal Laboratories for Materials Testing and Research, Laboratory for Building Technologies, Überlandstrasse 129, CH-8600 Dübendorf, Switzerland

In Fig. 6a and b, curves of wind speed and wind direction have partly been deleted.

DOI of original article: [10.1016/j.jweia.2008.02.008](https://doi.org/10.1016/j.jweia.2008.02.008)

* Corresponding author. Tel.: +31 40 247 2138; fax: +31 40 243 8595.

E-mail address: b.j.e.blocken@tue.nl (B. Blocken).

0167-6105/\$ - see front matter © 2008 Elsevier Ltd. All rights reserved.

doi:[10.1016/j.jweia.2008.05.001](https://doi.org/10.1016/j.jweia.2008.05.001)

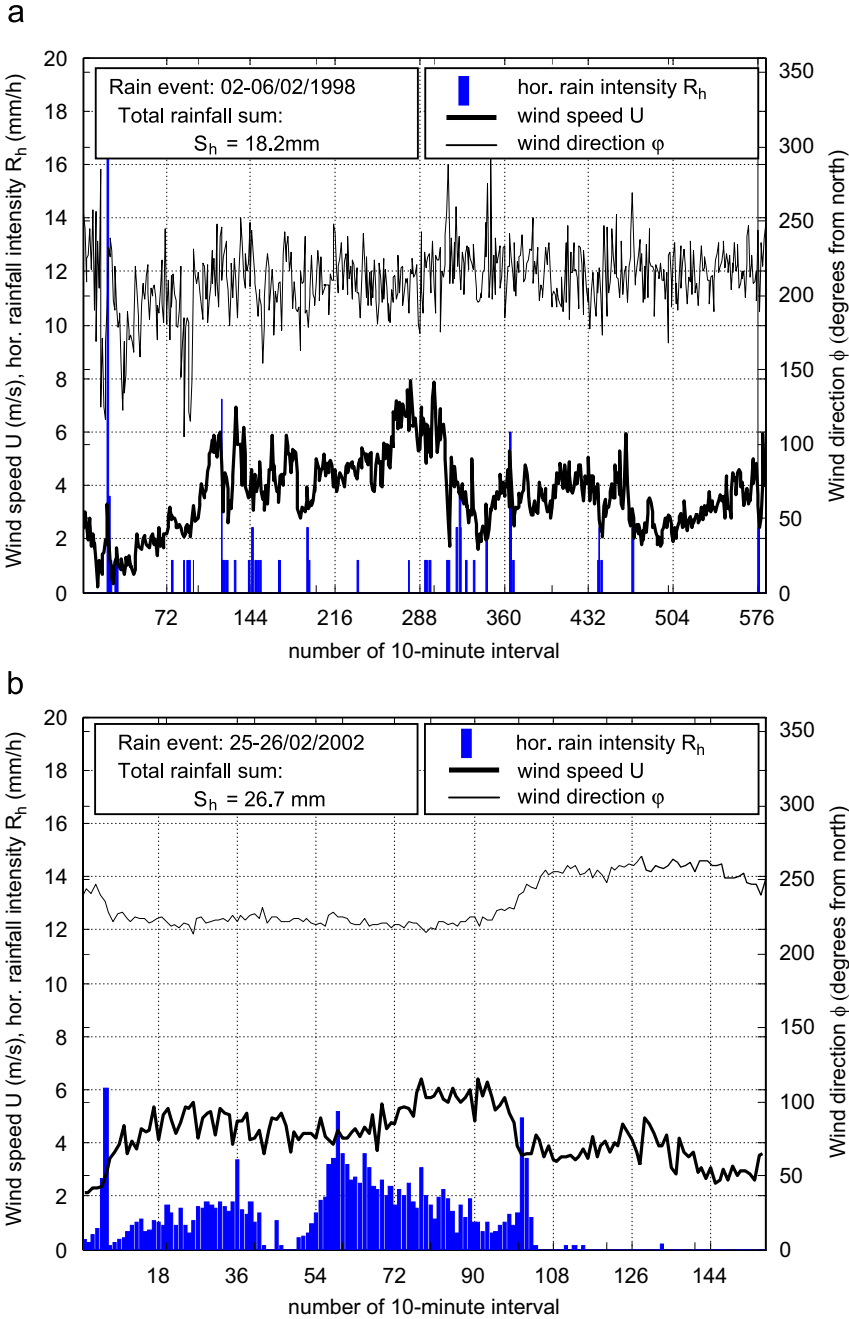


Fig. 6. (a) Example cumuloform and (b) example stratiform rain event with 10-minute values of the wind speed, wind direction and horizontal rainfall intensity.